

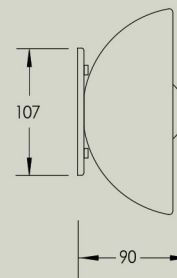
Aurelia Surface Sconce

Suitable as a wall light or ceiling light in both residential and commercial projects, the Aurelia Surface Sconce is defined by its distinctive bell-shaped translucent body.

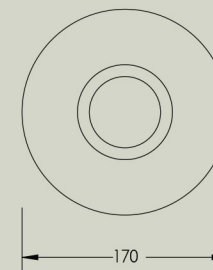
Details

Size (mm)	170w x 90d x 170h
Glass shade	60mm
Lamp base	G9 push fit
Lamp	220-280V 5W 3000K 370lm LED 100-130V 4.5W 3000K 450lm LED
Voltage	220-280V or 100-130V
Dimmable	Lamp included is compatible with most brand name dimmers
Weight	3,5kg
IP	IP44
Certification	CE UK CA
Note 1	Stone is a natural product and can vary in colour, tone and vein.
Note 2	Heavy item. Reinforcement behind substrate may be required. Please check with installer prior to installation. Suitable fixings required.

Side view



Front view



Finishes



Brushed Brass



Brushed Black Aluminium



White Satin



White Onyx



Jade Onyx



White Frosted Glass



Clear Frosted Glass



Opal Glass