

Terra 0.5 Wall Light



MARZ DESIGNS

info@marzdesigns.com
+61 (02) 6680 4971

3/1 Boronia Place
Byron Bay NSW 2481

www.marzdesigns.com



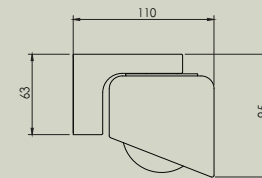
Terra 0.5 Wall Light

The Terra 0.5 Wall Light celebrates modular design and craftsmanship in a deceptively simple yet architectural form. Its sculptural metal bracket elegantly contrasts the asymmetric silhouette, making it a design statement. This understated yet luxurious light is available in six refined hues - Lead, Vanilla, Olive, Clay, Fog, and Chartreuse - each variation adds depths, warmth, and character.

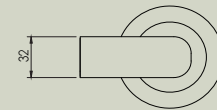
Details

Size (mm)	95h x 80w x 110d
Glass shade	60mm round
Lamp base	G9 push fit
Lamp	220-280V 4W 3000K 410lm LED 100-130V 4.5W 3000K 450lm LED
Voltage	220-280V or 100-130V
Dimmable	Lamp included is compatible with most brand name dimmers
Weight	Under 1kg
IP	IP44
Certification	CE UK CA 
Note 1	Ceramics are turned by hand on the wheel and can vary slightly in form and size which is considered a hallmark of the handmade

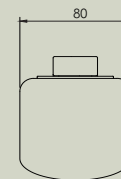
Side view



Top view



Front view



Finishes



Brushed
Brass



Brushed
Black
Aluminium



White Satin



Brushed
Nickel



Chartreuse
Ceramic



Fog
Ceramic



Clay
Ceramic



Olive
Ceramic



Lead
Ceramic



Vanilla
Ceramic



Clear
Frosted
Glass



White
Frosted
Glass



Opal
Glass