

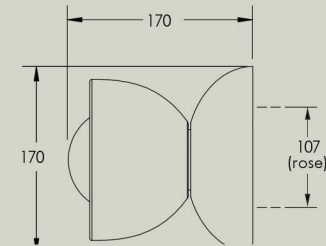
# Terra 00 Surface Sconce

Crafted with a combination of two contrasting half domes the Terra 00 is available in pendant and wall and ceiling mounted formats. Ceramic shades have been paired with hand-turned FSC certified timbers to create these unique pieces.

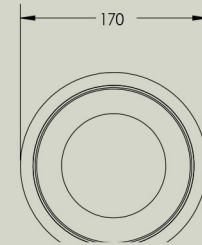
## Details

Size (mm)	170h x 170w x 170d
Glass shade	95mm
Lamp base	G9 push fit
Lamp	220-280V 5W 3000K 370lm LED 100-130V 4.5W 3000K 450lm LED
Voltage	220-280V or 100-130V
Dimmable	Lamp included is compatible with most brand name dimmers
Weight	Under 2kgs
IP	IP44
Certification	CE UK CA
Note 1	Ceramic pigments are mixed by hand and can vary up to 5% in colour tone and depth
Note 2	Wood is a natural product and can vary in colour and grain

Side view



Bottom view



## Finishes



Olive Ceramic



Slate Ceramic



Vanilla Bean Ceramic



Ash FSC



Walnut FSC



Bleached Ash FSC



Blackened Ash FSC



White Frosted Glass



Clear Frosted Glass



Opal Glass