

Terra 1.5 Ceiling Light

The Terra 1.5 Ceiling Light is a layered matte cylinder and glazed base which creates an asymmetric stack of ceramic forms with two contrasting finishes. Available in a choice of three natural tones – Slate, Sage and Vanilla Bean, each component on the Terra 1.5 is infused with subtle variations inherent in the handmade and made permanent in the firing.

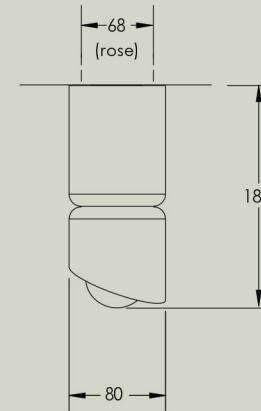
Details

Size (mm) Flush Mount	80w x 180d x 80h
Size (mm) Slim Base	107w x 190d x 107h
Glass shade	60mm round
Lamp base	G9 push fit
Lamp	220-280V 5W 3000K 370lm LED 100-130V 4.5W 3000K 450lm LED
Voltage	220-280V or 100-130V
Dimmable	Lamp included is compatible with most brand name dimmers
Weight	Under 1kg
IP	IP44
Certification	CE UK CA
Note 1	Ceramic pigments are mixed by hand and can vary up to 5% in colour tone and depth

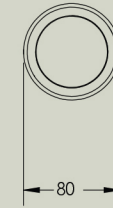
Finishes



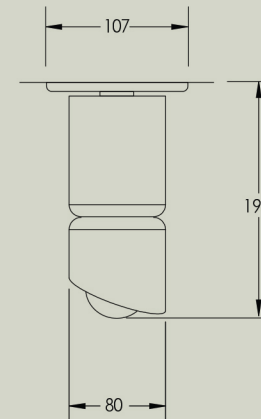
Flush Mount
Front view



Flush Mount
Bottom view



Slim Base
Front view



Slim Base
Bottom view

